

**GAUTRAIN MANAGEMENT AGENCY**



# **INCWADI YOKUCACISA**

**NGOKWESIGABA 14 SOMTHETHO 2 KA 2000  
WOKUTHUTHUKISA UKUTHOLAKALA  
KOLWAZI**

# 1. IZINCAZELO

Kule Ncwajana, ngaphandle kwalapho ingqikithi idinga noma ikhombisa ngenye indlela –

- 1.1 **“Imali yokufinyelela”** kusho imali enqunyiwe ngenhloso yokukhiqiza kabusha kanye nokusesha nokulungiselela, kanye nesikhathi esidingeka ngokwedlulele ngaphezu kwamahora anqunyelwe ukusesha nokulungisa irekhodi ukuze lidalulwe;
- 1.2 **“UMthetho”** usho uMthetho 2 Wokuthuthukisa Ukutholakala Kolwazi ka 2000 (Umthetho No. 2 Ka 2000);
- 1.3 **“Ummeleli”** kushiwo noma yiliphi ibhizinisi noma umuntu osebenza njengommeleli, egameni le-GMA;
- 1.4 **“Inkantolo”** kusho -
  - (a) iNkantolo Yomthethosisekelo esebenza ngokwesigaba 167 (6) (a) soMthethosisekelo weRiphabhuliki yaseNingizimu Afrika, 1996; noma
  - (b) (i) iNkantolo Ephakeme noma enye inkantolo enesimo esifanayo; noma
  - (ii) iNkantolo yeMantshi, kungaba ngokujwayelekile noma ngokwesigaba esithile sezinqumo ze-PAIA, eqokwe nguNgqongqoshe; ngesaziso kuGazethi futhi enganyelwe yimantshi noma yimantshi eyengeziwe eqokwe ngokwesigaba 91A se-PAIA, engaphansi kwendawo yayo –
  - (aa) isinqumo seSikhulu Esibhekele Ulwazi noma isiphathimandla esifanele somgwamanda womphakathi noma senhloko yegatsha elizimele sithathiwe;
  - (bb) uhlaka lukahulumeni noma umgwamanda wangasese othintekayo unendawo yawo eyinhloko yokuphatha noma yebhizinisi;
  - noma
  - (cc) umfakisicelo noma ilunga langaphandle elithintekayo lihlala ekhaya noma livamisile ukuhlala kuleyo ndawo;
- 1.5 **“Isihloko Sedatha/umnikazi wemininingwane”** kusho umuntu imininingwane ephathelene naye, noma umnakekeli osemthethweni noma umlondolozisi, esimweni somntwana omncane noma umuntu okhubazeke ngokomqondo;
- 1.6 **“ISekela Lesikhulu Esibhekele Ulwazi”** kusho isikhulu / iziphathimandla ezigunyazwe ngokufanelekile yiSikhulu Esibhekele Ulwazi ukuze siqinisekise ukuthi izidingo ze-PAIA ziyalandelwa noma zilawulwa ngendlela enobulungiswa, ngenhloso Kanye nendlela engachemile;
- 1.7 **“I-GMA”** isho inhlangotho yomphakathi yesifundazwe esungulwe ngokoMthetho weSikhungo Sokuphathwa Kwe-Gautrain ka-2006, (uMthetho No. 5 ka-2006) (“uMthetho we-GMA”);

- 1.8 **“Umhlahlandlela”** usho incwadi ekhishwe yiKhomishani Yamalungelo Esintu ngokwesigaba 10 se-PAIA ngenhloso yokusiza umuntu ofisa ukusebenzisa noma yiliphi ilungelo ngokwe-PAIA;
- 1.9 **“IKhomishani Yamalungelo Esintu”** isho iKhomishani Yamalungelo Esintu YaseNingizimu Afrika;
- 1.10 **“Isikhulu Esibhekele Ulwazi”**, esiphathelene-GMA, kusho isikhulu Esiphezulu;
- 1.11 **“UNgqongqoshe”** usho ilunga loMkhandlu oPhethe elibhekele ezokuThuthwa koMphakathi kanye nengqalazinda yemigwaqo esifundazweni sase-Gauteng;
- 1.12 **“I-PAIA”** isho uMthetho Wokukhuthaza Ukutholakala KoLwazi, ka-2000 (uMthetho No. 2 ka 2000);
- 1.13 **“Umuntu”** kusho umuntu wemvelo noma umuntu osemthethweni;
- 1.14 **“Umfakisiselo ocela ulwazi lwakhe”** kusho ofake isicelo ofuna ukufinyelela kwirekhodi eliqukethe imininingwane emayelana naye;
- 1.15 **“UMthetho we-POPI”** usho uMthetho Wokuvikelwa Kwemininingwane Yabantu, 2013 (uMthetho No. 4 ka 2013);
- 1.16 **“Inhlangano ezimele”** lisho lokhu –
- (a) umuntu wemvelo oqhuba noma oqhube noma yikuphi ukuhweba, ibhizinisi noma ubungcweti bomsebenzi, kodwa kuleso sikhundla kuphela;
  - (b) ubambiswano oluqhuba noma olwenzile noma yikuphi ukuhweba, ibhizinisi noma ubungcweti; noma
  - (c) noma yimuphi umuntu wangaphambili noma okhona ngokomthetho; kepha ayishiya ngaphandle inhlangano yomphakathi;
- 1.17 **“inhlangano yomphakathi”** isho lokhu –
- (a) noma yimuphi umnyango wezwe noma wezokuphatha emkhakheni kahulumeni kazwelonke noma wesifundazwe noma yimuphi umasipala emkhakheni wendawo; noma
  - (b) noma yimuphi omunye osebenzayo noma isikhungo lapho -
  - (i) ukusebenzisa amandla noma ukwenza umsebenzi ngokoMthethosisekelo noma ngokomthethosisekelo wesifundazwe;
  - noma
  - (ii) ukusebenzisa amandla omphakathi noma ukwenza umsebenzi womphakathi ngokwanoma yimuphi omunye umthetho;
- 1.18 **“Irekhodi”** lisho noma yiluphi ulwazi oluqoshiwe -
- (a) kungakhathalekile uhlobo noma indlela;

(b) ephethwe noma Engaphansi kwe-GMA noma yinoma yimuphi umgwamanda womphakathi noma wangasese ngokulandelana; futhi

(c) noma ngabe yenziwa yi-GMA noma yileyo nhlangano yomphakathi noma yangasese;

1.19 **“Isicelo sokuthola ulwazi”** kusho isicelo sokuthola irekhodi ngokwesigaba 11 se-PAIA;

1.20 **“Ofake isicelo”** kusho -

(i) noma yimuphi umuntu (ngaphandle kwenhlangano yomphakathi ehlongozwe endimeni (a) noma (b) (i) yencazelo ye “nhlangano yomphakathi”, noma umsebenzi wayo) owenza isicelo sokuthola irekhodi laleyo nhlangano yomphakathi; noma

(ii) umuntu omele umuntu okukhulunywe ngaye endimaneni (i);

1.21 **“Ilunga langaphandle”** usho noma yimuphi umuntu (kubandakanya, kodwa kungacini, kuhulumeni wezwe langaphandle, inhlangano yamazwe omhlaba noma uhlaka lwalowo hulumeni noma inhlangano) ngaphandle kwalokhu –

(i) umfakisicelo othintekayo; futhi

(ii) inhlangano yomphakathi.

1.22 **“Izinsuku zokusebenza”** kusho noma yiziphi izinsuku ngaphandle kweMigqibelo, amaSonto noma amaholide omphakathi, njengoba kuchaziwe esigabeni 1 soMthetho wamaHolide Omphakathi, 1994 (uMthetho, No. 36 ka-1994).

Kule Ncwajana, amagama angenisa noma ibuphi ubulili obubodwa azofaka obunye ubulili, futhi ubunye buzofaka nobuningi, ngaphandle uma umongo ukhombisa okuhlukile.

## **ISIGABA SOKUQALA**

### **2. INHLOSO YOKUTHUTHUKISA UMTHEHO WOKUTHOLAKALA KOLWAZI**

**2.1** Inhloso enkulu ye-PAIA ukwenza kusebenze ilungelo lomthethosisekelo lokufinyelela kunoma yiluphi ulwazi olugcinwe nguMbuso nanoma yiluphi ulwazi oluphethwe ngomunye umuntu futhi oluceliwe noma oludingekayo ekusetshenzisweni noma ekuvikelweni kwanoma imaphi amalungelo. I-PAIA ibeka izinqubo ezidingekayo ezihambisana nanoma yisiphi isicelo esinjalo.

**2.1** Ngokwe-PAIA, lapho isicelo solwazi senziwa enhlanganweni yomphakathi, kunesibopho sokunikeza imininingwane, ngaphandle kwalapho i-PAIA ihlinzeka ngokusobala ukuthi leyo mininingwane ingakhishwa. Ilungelo elikumthethosisekelo lokuthola ulwazi likhonjelwe:

2.1.1 imikhawulo evumelekile kubandakanya, kepha kungacini lapho, imikhawulo ehlose ukuvikela ubumfihlo obufanele, imfihlo kanye nokubusa okuhle nokusebenzayo; futhi

2.1.2 ukulinganiswa kwalelo lungelo namanye amalungelo, kubandakanya noMthethosivivinywa Wamalungelo, njengoba kwafakwa kuMthethosisekelo wa-1996.

2.2 I-PAIA isungula indlela noma inqubo yokuzithandela neyimpoqo yokwenza ilungelo lokufinyelela olwazini ngendlela elenza abantu bakwazi ukuthola amarekhodi ezinhlango zomphakathi ngokushesha okukhulu, ngendlela engabizi nangokomsebenzi ngangokunokwenzeka.

2.3 Isigaba 14 se-PAIA sidinga ukuthi izinhlango zomphakathi zihlanganise ibhukwana, okungenani ngezilimi ezintathu ezisemthethweni, eliqukethe imininingwane ngenhlango yomphakathi ukuze isetshenziswe ngumphakathi, futhi ngokuya ngezidingo ezibekwe ku-PAIA.

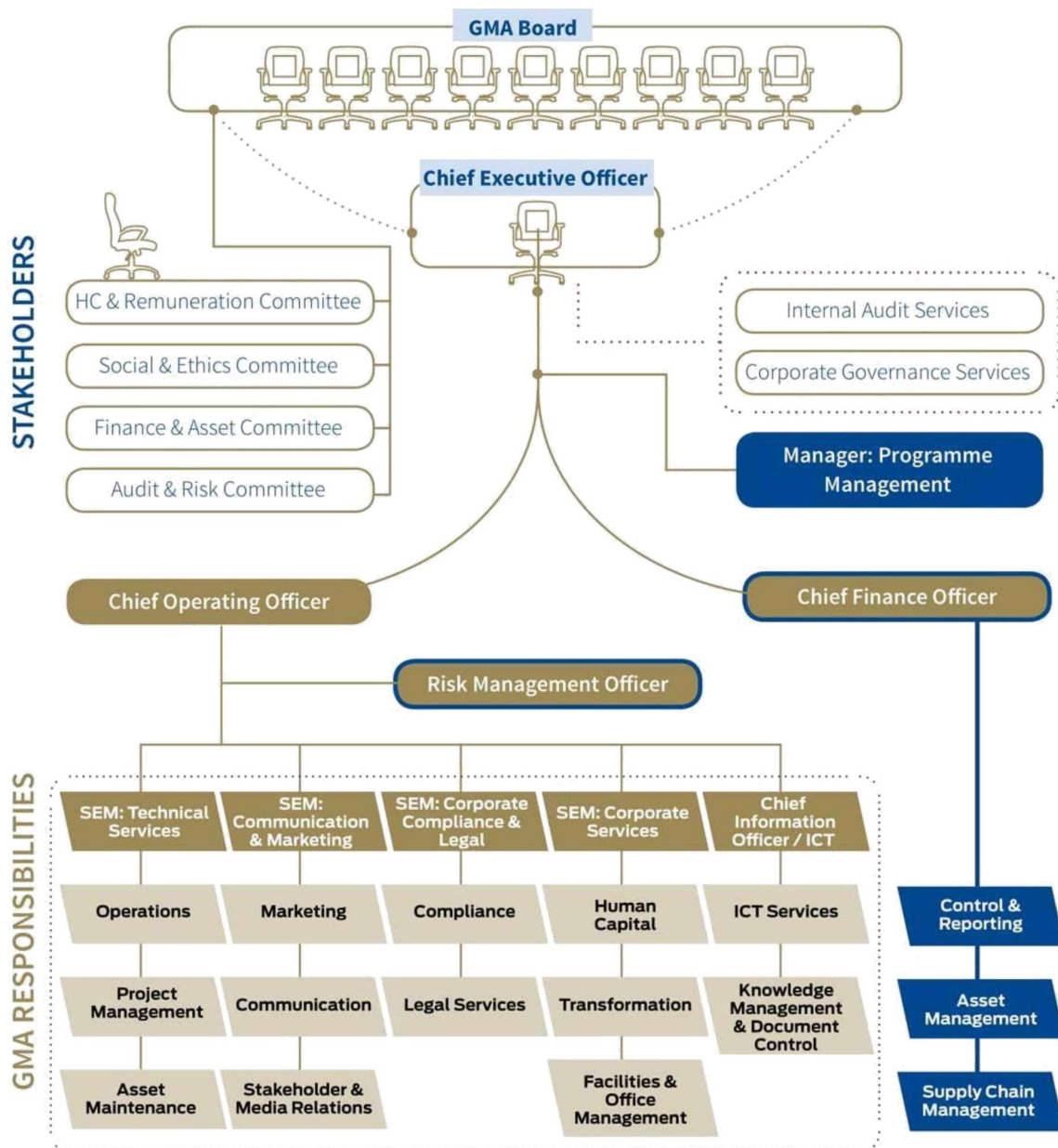
2.4 Inhloso yaleli bhukwana ukwazisa umphakathi ngamarekhodi aphelele yi-GMA (umgwamanda womphakathi ngokwe-PAIA) nokuthi ungawathola kanjani.

### **3 ISAKHIWO, IZINHLOSO, IMISEBENZI KANYE NAMANDLA ESIKHUNGO SOKUPHATHWA KWE-GAUTRAIN**

#### **Isakhiwo**

3.1 I-GMA yinhlango yomphakathi wesifundazwe efakwe kuhlu ngaphansi kweSheduli 3 (C) yoMthetho Wokuphathwa Kwezimali Zomphakathi, uNo. 1 wa-1999, futhi yasungulwa ngokoMthetho we-GMA. I-GMA, njengesikhungo sikaHulumeni wesifundazwe saseGauteng (“isiFundazwe”), inoNgqongqoshe obhekele ezokuThuthwa koMphakathi kanye nengqalasizinda yemigwaqo njengeSigungu Esiphethe kanye neBhodi ye-GMA njengesiphathimandla esiphendulayo. Ukuphathwa kwansuku zonke kwebhizinisi nezindaba ze-GMA kungomsebenzi womphathi Omkhulu (“CEO”), osizwa ngokufanelekile yithimba lakhe labaphathi kulokhu.

3.2 Umdwebo ongezansi ukhombisa isakhiwo se-GMA.



## Izinhloso

- 3.3 I-GMA yasungulelwa, phakathi kokunye, ukuphatha, ukudidiyela kanye nokwengamela iGautrain Rapid Rail Link Project (“iPhrojekthi”) futhi, ngaphandle kokuqinisekisa okujwayelekile kwalokhu okungenhla,
- 3.3.1 ukusiza isiFundazwe ekusebenziseni iPhrojekthi nokufeza izinhloso zayo;
  - 3.3.2 ukusebenza egameni leSifundazwe ekuphatheni ubudlelwano phakathi kwesiFundazwe kanye nabanikezeli ngokuvumelana ngezivumelwano zemvume futhi iqinisekise ukuthi izintshisekelo zesiFundazwe ziyavikelwa;
  - 3.3.3 ukuphatha izimpahla eziphathelelene nePhrojekthi nokukhuthaza ukulondolozwa kwazo kanye nokugcinwa kwazo;

- 3.3.4 ukuphatha izimali zePhrojekthi kanye nokuphepha kwezezimali okuhlinzekwa ngabanikezeli ngemvume;
- 3.3.5 ukuxhumana nokukhuthaza ukusebenzisana phakathi kwezinhlaka zikahulumeni kuyo yomithathu imikhakha kahulumeni maqondana nePhrojekthi;
- 3.3.6 ukuxhumana nabantu abanentshisekelo kule Phrojekthi;
- 3.3.7 ukugqugquzela nokwandisa intuthuko yezenhlalo nezomnotho kanye nezinhloso ze-BBBEE zesiFundazwe maqondana nePhrojekthi;
- 3.3.8 ukuqapha inqubomgomo kanye nendawo yezomthetho yePhrojekthi; futhi
- 3.3.9 ukwenza ngcono ukuhlenganiswa kwePhrojekthi nezinye izinsiza zezokuthutha kanye nezinhlelo zezokuThuthwa Komphakathi.

### **Imisebenzi**

- 3.4 Ngokomthetho we-GMA, i-GMA kumele isebenzise le misebenzi elandelayo:
  - 3.4.1 ukwenza imisebenzi eyabelwe yona wuMthetho we-GMA, Umthetho Kazwelonke Wokuphathwa Kwezitimela, No. 16 wa-2002 nanoma yimuphi umthetho osebenzayo;
  - 3.4.2 ukusebenzisa amalungelo nokwenza imisebenzi yesiFundazwe ngokuya ngezivumelwano zemvume;
  - 3.4.3 ukuphatha nokwengamela izivumelwano zemvume egameni lesiFundazwe;
  - 3.4.4 ukusebenza njengesikhungo sikaNgqongqoshe ngaphansi kwesigaba 56 (2) soMthetho Wengqalasizinda Yezokuthutha eGauteng, uNo. 8 ka-2001, maqondana nokuvikelwa kwesitimela kanye nezinye izingqalasizinda zezokuthutha zesifundazwe ezithintekayo kwiPhrojekthi;
  - 3.4.5 isungule futhi isebenzise izinhlelo zolwazi nokuphathwa kwePhrojekthi;
  - 3.4.6 ukuxhumana nokushintshisana ngolwazi nezikhungo, iziphathimandla noma izinhlangano eziqeqeshiwe maqondana nezindaba zesitimela eNingizimu Afrika noma kwamanye amazwe; futhi
  - 3.4.7 ukwenza noma yimuphi omunye umsebenzi ohlobene nomsebenzi wezokuthutha onganikezwa isikhungo nguNgqongqoshe ngezikhathi ezithile.

### **Amandla**

- 3.5 I-GMA inikwe amandla wuMthetho we-GMA ukusebenzisa amandla abekwe ngezansi nokwenza konke okudingekayo ukwenza imisebenzi yayo kubandakanya: -

3.5.1 ukuthenga, ukuqasha noma ukuthola nokugcina, ukuthengisa, ukushintshanisa noma ukuqashisa noma ukubhekana nezimpahla ngenhloso yoMthetho we-GMA, inqobo nje uma izimpahla zingatholwa noma zihlukaniswe ngaphandle kwemvume kaNgqongqoshe (MEC) obhekele uMgcinimafa esiFundazweni;

3.5.2 ukuqinisekisa ukuthi i-GMA ivikeleke ngokwanele kunoma iyiphi ingozi, ukulahleka noma ukulimala okuhlobene nokusebenzisa amandla ayo noma ukwenziwa kwemisebenzi noma imisebenzi yayo;

3.5.3 ukusebenzisa noma yimaphi amandla noma ukwenza noma imuphi omunye umsebenzi enikezwe wona noma ngokoMthetho we-GMA noma omunye umthetho; futhi

3.5.4 ukwenza noma yini enye evumelana nezinjongo zayo, imisebenzi Kanye namandla ayo.

3.6 Ukuze kwenziwe lula ukwakhiwa, ukuthuthukiswa, ukusebenza kanye nokugcinwa kwePhrojekthi, isiFundazwe sangena Esivumelwaneni Semvume (“i-CA”) neBombela Concession Company (Pty) (Ltd) (“Bombela”).

3.7 Ngakho-ke ukusebenza kwePhrojekthi, kwenziwa ngohlobo Lokusebenzisana Komphakathi Kwangasese phakathi kwesiFundazwe neBombela, okufakwe kulo ngokulandela Umthethonqubo Womnyango Wezezimali. , isebenze futhi igcine uhlelo lweGautrain.

3.8 Mayelana nalokhu, iBombela yenza umsebenzi womphakathi egameni lesiFundazwe. Ngenxa yalokho, iBombela inikezwe amandla namalungelo athile ukuze ikwazi ukuhambisana nezibophezelo zayo zenkontileka, njengoba kubekiwe ku-CA.

## **ISIGABA SESIBILI**

### **4 IMININGWANE YOKUXHUMANA NE-GMA**

[ISIGABA 14(1) (b)]

#### **4.1 ISIKHULU SOLWAZI**

Ngokomthetho, isikhulu esiPhezulu se-GMA yiSikhulu Esibhekele Ulwazi.

**ikheli leposi** : P.O. Box 1266  
Kelvin, 2054

**Ikheli Lendawo** : 44 Grand Central Boulevard



Grand Central Ext 1  
Midrand

**Inombolo yocingo** : +27 11 086 3500  
**Inombolo Yesikhahlamezi** : +27 11 580 0604  
**Iwebhusayithi** : [www.gautrain.co.za](http://www.gautrain.co.za)  
**Isikhulu Esibhekele Ulwazi** : CEO  
**Ikheli le-imeyili lesikhulu solwazi** : [williamd@gautrain.co.za](mailto:williamd@gautrain.co.za)

#### 4.2 IPHINI LESIKHULU SOLWAZI

Ngokuya ngezinhlinzeko zoMthetho, iSikhulu Esibhekele Ulwazi sigunyaze ngokufanelekile amaSekela EziPhathimandla Zolwazi amathathu. Lapho ufaka isicelo, uyacelwa ukuthi usibhekise komunye wala maSekela eSikhulu Esibhekele Ulwazi.

**Iphini Lesikhulu Solwazi** : Isikhulu Esibhekele Ezemisebenzi  
**Ikheli le-imeyili** : [tshepok@gautrain.co.za](mailto:tshepok@gautrain.co.za)  
**Iphini Lesikhulu Solwazi** : Isikhulu Esibhekele Ulwazi  
**Ikheli le-imeyili** : [nkhanel@gautrain.co.za](mailto:nkhanel@gautrain.co.za)

## 5. UMHLAHLANDLELA UDIDIYELWE NGABAMELE AMALUNGelo ABANTU ENINGIZIMU AFRIKA IKHOMISHANA (“SAHRC”)

Umhlahlandlela ohlongozwe esigabeni 10 se-PAIA uyatholakala kwa-SAHRC. Mayelana nalokhu, noma imiphi imibuzo ingabhekiswa ku:

**SAHRC**

**Iyunithi le-PAIA**

**UMnyango Wezocwangingo Nemibhalo**

**Private Bag 2700**

**Houghton, 2041**

**Ucingo** : +27 11 8773640/3769  
**Isikhahlamezi** : +27 11 4841366  
**I-imeyili** : [PAIA@sahrc.org.za](mailto:PAIA@sahrc.org.za)  
**Iwebhusaythi** : [www.sahrc.org.za](http://www.sahrc.org.za)

## **ISIGABA SESITHATHU**

### **6. INQUBO YOKUFINYELELEKA NOMA UKUCELA AMAREKHODI E-GMA**

Isicelo sokufinyelela kumarekhodi agcinwe yi-GMA kufanele senziwe ngokugcwalisa Ifomu elinqunyiwe, nangokulethwa, noma ukuthunyelwa kunoma yimaphi amakheli noma imininingwane yokuxhumana okukhulunywe ngayo esigabeni 4 sale Ncwajana. Umfakisicelo, lapho efaka isicelo sokufinyelela kumarekhodi e-GMA, kufanele asebenzise iFomu A, elihlanganiswe nalokhu. Kumele kuqashelwe ukuthi imali ebekiwe yokufinyelela kanye nemali yesicelo ingakhokhiswa maqondana nanoma yisiphi isicelo sokufinyelela kumarekhodi e-GMA.

Ithempulethi noma ikhophi yephrofoma yefomu lesicelo kanye nemininingwane yalo nayo ingatholakala kuwebhusayithi ye-SAHRC ([www.sahrc.org.za](http://www.sahrc.org.za)) noma kuleyo yoMnyango Wezobulungiswa Nokuthuthukiswa Komthethosisekelo ([www.justice.gov.za](http://www.justice.gov.za)).

#### **Isicelo egameni lomunye umuntu**

Uma isicelo senzela omunye umuntu, umfakisicelo kufanele athumele ubufakazi besikhundla akuso uma enza isicelo, ukwenzela ukugculiseka kweSikhulu Esibhekele Ulwazi [isigaba 18 (2) (f)].

#### **Isicelo sabantu abakhubazekile**

(a) Uma umfakisicelo engakwazi ukufunda noma ukubhala, noma uma enokukhubazeka okumvimbela ukuthi agcwalise ifomu elibekiwe, lapho-ke angenza isicelo ngomlomo. Isikhulu Esibhekele Ulwazi sizobe sesigcwalisela umfakisicelo ifomu bese sinikeza umfakisicelo ikhophi lefomu eligcwalisiwe [isigaba 18 (3)].

(b) Isikhulu Esibhekele Ulwazi sizosiza umfakisicelo ukuthi ahambisane nalezi zidingo ezibalulwe ngenhla zokucela ukufinyelela olwazini, kubandakanya nokuthumela ofake isicelo kwenye inhlango yomphakathi, uma kubonakala ukuthi isicelo solwazi bekufanele ngabe senziwe, kuleyo nhlangano [isigaba 19].

#### **Ukudluliselwa kwezicelo [isigaba 20]**

(a) Isikhulu Esibhekele Ulwazi se-GMA kufanele sidlulisele izicelo zamarekhodi kwenye inhlango yomphakathi uma:

- (i) Irekhodi liphethwe yileyo nhlangano yomphakathi;
- (ii) isihloko serekhodi sihlobene kakhulu nemisebenzi yalelo gatsha lomphakathi;
- (iii) irekhodi lenzelwa leyo nhlangano yomphakathi, noma lamukelwa kuqala yilelo bhodi; noma
- (iv) irekhodi liqukethe imininingwane yokuhweba lapho leyo nhlangano yomphakathi inentshisekelo enkulu yezohwebo.

(b) Ezimweni lapho kusebenza isigaba (c) ngenhla, iSikhulu Esibhekele Ulwazi kuzodingeka ukuthi isicelo sisidlulisele kolunye uhlaka lukahulumeni ngokushesha okukhulu, kodwa kungakapheli izinsuku eziyi-14 isicelo sesitholakele. Uma i-GMA iphethe irekhodi elicelwayo futhi Isikhulu Esibhekele Ulwazi sikubona kuwusizo ukwenza kanjalo ukuze Isikhulu Esibhekele Ulwazi sesinye isigungu sikahulumeni sizokwazi ukubhekana nesicelo, irekhodi noma ikhophi yerekhodi lizothunyelwa kuleso Sikhulu Esibhekele Ulwazi.

(c) Uma isicelo sokufinyelela kwirekhodi sidluliseliwe, noma yisiphi isikhathi esinqunyiwe sokuqedela umsebenzi ohlobene nesicelo kufanele sibalwe kusukela osukwini iSikhulu Esibhekele Ulwazi okudluliselwe kuso esathola ngaso isicelo. Lokhu kufanele kulandelwe ngazo zonke izikhathi ezifanelekile ngenkathi kufakwa isicelo solwazi.

### **Isaziso sokudlulisa**

(a) Uma isicelo sokufinyelela sesidluliseliwe, iSikhulu Esibhekele Ulwazi okuyisona esidluliselayo siyobe sesazisa ngokushesha loyo ofake isicelo ngalokhu:

- (i) Ukudlulisela;
- (ii) Isizathu sokudlulisela; kanye
- (iii) Nesikhathi okumele isicelo sibhekwe ngaso [isigaba 20(5)].

(b) Isikhulu Esibhekele Ulwazi kumele siqinisekise ukuthi irekhodi lokucelwa kokufinyelela liyagcinwa kuze kuthathwe isinqumo mayelana nokutholakala kolwazi [isigaba 21].

## **7. IMIKHAKHA YAMAREKHODI ASE-GMA**

7.1 I-GMA njengamanje iphethe imikhakha yamarekhodi elandelayo:

7.1.1 Ukubuyekezwa kwezakhiwo

- 7.1.2 Ubuchwepheshe bokwakha nemishini;
- 7.1.3 Ukulandelela inqubekela phambili;
- 7.1.4 Izithombe zamaprojekthi;
- 7.1.5 Umbiko wonyaka we-GMA;
- 7.1.6 Incwadi yezindaba ze-Gautrain;
- 7.1.7 UMthetho weSikhungo Sokuphathwa KweGautrain, No. 5 ka 2006; kanye
- 7.1.8 NoMthetho Wengqalasizinda Yezokuthutha eGauteng, No. 8 ka 2001.

### **Amarekhodi atholakala kalula [isigaba se-14 (1) (e)]**

7.2 Lesi sigaba solwazi sihlobene nolwazi olutholakala emphakathini okusho ngaphakathi nangaphandle. Lolu lwazi lungatholakala kalula ngaphandle kwenqubo yokufaka isicelo esemthethweni ye-PAIA. Lokhu okulandelayo ngezinye zezimiso nemibhalo, okugcinwa ngayo amarekhodi yi-GMA, engaphelelanga.

- 7.2.1 Umthetho Wentela Yemali Engenayo, No. 58 ka 1962;
- 7.2.2 Umthetho wenani elengeziwe lentela, No. 89 ka 1991;
- 7.2.3 Umshuwalense wokungasebenzi osemthethweni wokusebenza, No. 63 ka 2001;
- 7.2.4 Umthetho Wokulingana Emsebenzini, No. 55 ka 1998;
- 7.2.5 Umthetho Wezempilo Nokuphepha Emsebenzini, No 85 ka 1993;
- 7.2.6 Umthetho Wokuthuthukiswa Kwamakhono, No. 9 ka 1999;
- 7.2.7 Umthetho wezimpawu zokuhweba No. 194 ka 1993;
- 7.2.8 Imibiko yonyaka; kanye
- 7.2.9 Neminye imininingwane eshicilelwe kuwebhusayithi ye-GMA.

## **[isigaba 14(1)(f)]**

7.3 Imininingwane ephathelene nokuphathwa kanye nemisebenzi yebhizinisi yansuku zonke ye-GMA ingatholakala kuphela ngokuya ngemikhawulo ebekwe ku-PAIA kanye neminye imithetho esebenzayo.

7.4 Kodwa-ke, amalunga omphakathi angahle akwazi ukuthola imininingwane ephathelene nokwenyuswa kanye nokumakethwa kwale Phrojekthi, lokhu kuncike ekutholakaleni nasezinhlweni ezenziwe ngaphambili. Lapho i-GMA icelwa ukuthi ikhiqize kabusha leyo mininingwane noma amarekhodi, umfakisiselo othintekayo uzokhokhiswa imali ebekiwe yokukhiqiza kabusha.

7.5 Amakhophi alemibhalo elandelayo angadonswa ngenkululeko kuwebhusayithi yeGautrain ([www.gautrain.co.za](http://www.gautrain.co.za)) kanye / noma angahlolwa, mahhala, emahhovisi akwa-GMA (kuncike ekuhlelweni okwenziwe ngaphambi kwesikhathi nokutholakala kwemibhalo):

7.5.1 Ukubuyekezwa kwezakhiwo;

7.5.2 Ubuchwepheshe bokwakha nemishini;

7.5.3 Ukulandelela inqubekela phambili;

7.5.4 Izithombe zamaphrojekthi;

7.5.5 Umbiko wonyaka we-GMA;

7.5.6 Incwadi yezindaba ze-Gautrain;

7.5.7 UMthetho weSikhungo Sokuphathwa KweGautrain, No. 5 ka 2006; kanye

7.5.8 Umthetho Wengqalasizinda Yezokuthutha eGauteng, No. 8 ka 2001.

Ezimweni lapho ofake isicelo edinga amakhophi alawo marekhodi atholakala ngenkululeko ukuthi akhiqizwe kabusha, imali enqunyiwe yokukhiqiza izokhokhwa ngumfakisiselo ku-GMA.

## **8 UKUNQATSHELWA KOKUTHOLAKALA KOLWAZI**

8.1 ISekela Lesikhulu Esibhekele Ulwazi, ngokuya ngeminye imibandela yoMthetho, liyokwenqaba isicelo solwazi noma irekhodi uma lolo lwazi noma lelo rekhodi lihlobene nalokhu:

8.1.1 isibophezelo sokuvikela izimfihlo zelunga langaphandle elingumuntu wemvelo;

- 8.1.2 isibophezelo sokuvikela imininingwane yezohwebo ye-GMA;
- 8.1.3 isibophezelo sokuvikela imininingwane yezentengiselwano yelunga langaphandle;
- 8.1.4 isibophezelo sokuvikela imininingwane eyimfihlo yelunga langaphandle;
- 8.1.5 isibophezelo sokuvikela amarekhodi asethubeni lokukhiqizwa lapho kuthathwa izinyathelo zomthetho;
- 8.1.6 imininingwane ephathelene nocwango olwenziwa noma olwenzelwe i-GMA, ukudalulwa kwalo okungenzeka kuveze obala i-GMA, noma umuntu owenza noma ozokwenza ucwango egameni le-GMA noma isihloko se-GMA. ucwango, kube sengozini enkulu; futhi
- 8.1.7 umbono, iseluleko, umbiko noma isincomo esitholakele noma esilungiselelwe, noma i-akhawunti yokubonisana, ingxoxo noma ukucubungula okwenzekile, kubandakanya kodwa kungacini kwimizuzu yomhlangano, phakathi kwezinye izinto, ngenhloso yokuthathela i-GMA isinqumo.

## **9 UKUCUTSHUNGULWA KWEMININGWANE YOMUNTU NGOKOMTHETHO WE-POPI**

### **9.1 Ukucutshungulwa kwemininingwane yomuntu**

I-GMA , ngezikhathi ezithile, icubungula imininingwane yomuntu ephethwe noma ekungeyamnikazi wemininingwane. Lokhu kucubungula kudingwa yi-GMA ukulandela izinhloso namasu ebhizinisi, futhi, kokunye, ngezinhloso ezilandelayo:

- 9.1.1 ukubeka izindlela zokuvikela ukuze umnikazi wemininingwane avikeleke kanye / noma izintshisekelo ezisemthethweni ze-GMA;
- 9.1.2 ukuxhumana nomnikazi wemininingwane kanye nokunaka imibuzo nezicelo zakhe;
- 9.1.3 ukwenza imisebenzi yangaphakathi, kubalwa ukuphathwa kwabasebenzi, uhlelompilo lwabasebenzi, ukwenziwa kwayo yonke imisebenzi edingekayo ephathelene neminyango yabasebenzi kanye nobudlelwane bezimboni, nemibuzo, ukubhekelela zonke izindaba zezezimali; futhi
- 9.1.4 ukugwema ukukhwabanisa nokuphatha budedengu izinqubo ze-GMA, izinhlelo kanye nokusebenza, kubandakanya ukwenza uphenyo lwangaphakathi nolwangaphandle kanye nemibuzo yokuqondiswa kwezigwegwe nokulalelwa kwamacala.

### **9.2 Ukukolekwa Kwemininingwane Eqondene Nomuntu**

Umuntu okoleka imininingwane yomuntu kumnikazi wemininingwane ngqo , egameni le-GMA noma ummeleli wayo, uzoqinisekisa:

- 9.2.1 ukuba khona kwesizathu esiphathekayo nesisemthethweni sokukoleka imininingwane, okuncike kwisidingo sokulandela izintshisekelo ezisemthethweni ze-GMA noma ummeleli wayo;
- 9.2.2 ukuthi ulwazi lomuntu olukolekiwe lwanele, lufanele, futhi alweqile inhloso eliqoqelwe yona;
- 9.2.3 ukuthi umnikazi wemininingwane usayina imvume ebhaliwe, ivumela i-GMA, ummeleli wayo, kanye nalowo ozongena esikhundleni sakhe, ukusebenzisa imininingwane;
- 9.2.4 ukuthi imvume, okukhulunywe ngayo ngenhla, icacisa izinhloso lemininingwane engasetshenziselwa zona;
- 9.2.5 lapho kungenzeka khona, ukuthi imvume icacisa isikhathi eside, ngokuya nganoma yisiphi isikhathi esisemthethweni sokugcina esinqunywe kunoma yimuphi umthetho osebenzayo, lapho imininingwane yomuntu ingagcinelwa khona; futhi
- 9.2.6 ukuthi umnikazi wemininingwane uyaqinisekisa ukuthi ulwazi olulethiwe lufanele futhi luphelele.

### **9.3 Ukugcinwa, ukuphathwa nokushatshalaliswa kolwazi**

- 9.3.1 I-GMA izoqinisekisa ukuthi imininingwane yomnikazi iyagcinwa futhi iphathwa ngendlela eyenza ukuthi kugcinwe ngokuphepha ubuqotho bayo, isiqiniseko sokuvikelwa kwamalungelo ezimfihlo zomnikazi wemininingwane, ukusetshenziswa kuhambisana nenhloso ulwazi olunikezwe ngayo, kanye nokuqinisekisa ukuthi okungenhla kuqashiwe.
- 9.3.2 Uma Ulwazi Lomnikazi wemininingwane lungasadingeki ngenxa yokuthi inhloso yokuthi Ulwazi Lomuntu Olugcinelwe yona seluphelile futhi seluphelelwe yisikhathi, leyo mininingwane izogcinwa ngokuphepha nangokuvikelekile ngezikhathi ezidingekayo noma isikhathi eside uma lokhu kufunwa yi-GMA. Ngemuva kwalokho i-GMA izoqinisekisa ukuthi leyo mininingwane iyashatshalaliswa unomphela.

### **9.4 Ukudluliswa kolwazi elungwini langaphandle**

- 9.4.1 Ngaphambi kokudlulisela imininingwane yomuntu elungwini langaphandle, i-GMA noma ummeleli wayo uzoqinisekisa ubukhona besigunyazo somnikazi wemininingwane, ukuze ukudluliselwa kwemininingwane kuzoqondaniswa naleyo mvume yomnikazi wemininingwane, noma ukushicilelwa ngenhloso kwemininingwane okwenziwe umnikazi.
- 9.4.2 Imininingwane yomuntu ingadluliselwa kwilunga langaphandle uma i-GMA noma ummeleli wayo esezanelisile ngokwanela nokufaneleka kwezinqubo nezinhlelo zelunga langaphandle, okuhloswe ngazo ukuqinisekisa ubuqotho, imfihlo, nokusetshenziswa okusemthethweni kwemininingwane yomuntu okufanele idluliselwe kuyo .
- 9.4.3 Kuzogcinwa irekhodi elinemininingwane yezinhlelo nezinqubo zolwazi zelunga langaphandle, ukuze zisetshenziswe esikhathini esizayo.
- 9.4.4 Imininingwane yomuntu ingadluliselwa kwilunga langaphandle uma kunesivumelwano esibhaliwe, phakathi kwe-GMA noma ummeleli wayo kanye nelunga langaphandle, elihlinzekela lokhu (phakathi kokunye):
- 9.4.4.1 inhloso yokudluliselwa kwemininingwane;
  - 9.4.4.2 izibopho zelunga langaphandle maqondana nokungadalulwa kolwazi;
  - 9.4.4.3 imibandela yokugcina, ukufinyelela, ukuphepha nokulahlwa kolwazi;
  - 9.4.4.4 ubunikazi bolwazi;
  - 9.4.4.5 ukwenqatshelwa kokudluliselwa kolwazi ngale kwemingcele yaseNingizimu Afrika;
  - 9.4.4.6 ilungelo le-GMA noma lommeleli wayo lokuhlola izinhlelo nezinqubo zolwazi lomuntu zelunga langaphandle, ngenkathi ilunga langaphandle linolwazi oludluliseliwe eluphethe; futhi
  - 9.4.4.7 izinqubo eziphathelene nokwepulwa kokuphepha kwemininingwane yomuntu, kanye nesibopho sokwepulwa kokuphepha kolwazi lwelunga langaphandle.
- 9.4.5 I-GMA izogcina irejista yemininingwane yomuntu edluliselwe kwilunga langaphandle.

## 10 INDLELA YOKUTHOLA UKUFINYELELA KULENCWADI

Amakhophi ale ncwadi, njengoba evuselelwa ngezikhathi ezithile, angatholakala futhi ahlolwe emahhovisi e-GMA ekheleni elibhalwe esigabeni 4 salokhu noma kuwebhusayithi ye-GMA.



## **11 IZISOMBULULO LAPHO I-GMA YENQABA NOMA YEHLULEKA UKUVUMELA UKUFINYELELA KULWAZI OLUTHILE**

### **Isikhalazo Sangaphakathi [Isigaba 74]**

Uma i-GMA yehluleka noma yenqaba ukuvumela noma yimuphi umfakisicelo ukuthi afinyelele kumarekhodi akhe, lowo mfakisicelo othintekayo noma ilunga langaphandle lingafaka isikhalazo sangaphakathi kuNGQONGQOSHE (MEC).

### **Ifomu [isigaba 75 (1)]**

- (a) Lapho ufaka isicelo sokudlulisa icala, ofake isikhalo uyanxuswa ukuthi asebenzise iFomu B, elifakwe lapha.
- (b) Isikhalazo kufanele sifakwe zingakapheli izinsuku ezingama-60 kusukela ngosuku umfakisicelo athola ngalo isaziso sokuthi isicelo senqatshiwe futhi kufanele sinikezwe iSikhulu Esibhekele Ulwazi esivezwe endimeni 4 yalokhu.

### **Imali yesikhalazo [isigaba 75 (3)]**

Ofaka isicelo kufanele akhokhe imali enqunyiwe yokudlulisa icala (uma ikhona). Isinqumo ngesikhalazo sangaphakathi singamiswa kuze kukhokhwe imali yesikhalazo.

### **Ukufakwa kwesikhalazo sangaphakathi kuNgqongqoshe [isigaba 75 (4)]**

Isikhulu Esibhekele Ulwazi kufanele sifake isicelo sokubuyekeza sangaphakathi, zingakapheli izinsuku eziyi-10 zokusebenza sisitholile, kuNQONGQOSHE (MEC). UNgqongqoshe kumele, ngasikhathi esisodwa, anikezwe izizathu zesinqumo seSikhulu soLwazi esifakelwe isikhalazo sangaphakathi futhi neminingwane yanoma yiliphi ilunga langaphandle elibandakanyekayo, okumele aziswe ngesicelo ngokwesigaba 47 (1) soMthetho.

### **Ilunga langaphandle [isigaba 76]**

- (a) Lapho uNgqongqoshe ecubungula isicelo sangaphakathi sokuphikisa ukwenqatshwa kwesicelo sokuthola irekhodi lomuntu wesithathu, ukudalulwa kwaso -
  - (aa) kungabandakanya ukuvezwa okungafanelekile kweminingwane yomuntu;
  - (bb) kungathunaza intshisekelo yezezimali yelunga langaphandle; noma
  - (cc) lokho kuyoba ukwephula isibopho sobumfihlo,

uNgqongqoshe kufanele azise ilunga langaphandle ngesikhalazo kungakapheli izinsuku ezingama-30 etholile.

(b) UNgqongqoshe kumele anikeze ilunga langaphandle incazelo yokuqukethwe yisikhalazo, kanye neminingwane yalowo ofake isicelo futhi kufanele asho ukuthi ngabe uNgqongqoshe ubona ukuthi umphakathi ungasizakala yini uma kudalulwa ulwazi. Ilunga langaphandle **unezinsuku ezingama-21** zokwenza isethulo esibhaliwe kuNgqongqoshe ukuthi kungani isicelo solwazi kungafanele siphumelele noma, kungenjalo, anikeze umfakisicelo imvume ebhaliwe yokudalulwa kwerekhodi..

(c) Uma uNgqongqoshe ecubungula isikhalazo sangaphakathi sokuphikisana nokunikezwa kwesicelo sokuthola ulwazi, uNgqongqoshe kufanele azise umfakisicelo othintekayo ngesikhalazo zingakapheli **izinsuku ezingama-30** etholile. Umfakisicelo **unezinsuku ezingama-21** zokwenza isethulo esibhaliwe sokuthi kungani ukufinyelela kwirekhodi kufanele kuvunyelwe.

### **Isaziso sesinqumo [isigaba 77]**

Lapho enquma ngesikhalazo sangaphakathi, uNgqongqoshe anganika isiqiniseko sesinqumo sokuqala seSikhulu Solwazi noma enze isinqumo esisha. Lokhu kufanele kwenziwe zingakapheli **izinsuku ezingama-30** ngemuva kokutholwa kwesikhalazo sangaphakathi, noma kungakapheli izinsuku ezinhlanu zokusebenza ngemuva kokuthola isethulo esibhaliwe maqondana nesikhalazo. UNgqongqoshe kufanele azise lowo ofake isicelo ngokushesha, wonke amalunga angaphandle athintekayo kanye nomfakisicelo ngesinqumo futhi kufanele anikeze izizathu zesinqumo. Uma uNgqongqoshe ehluleka ukulandela izinqubo ezingenhla kanye nezikhathi ezibekiwe zokucutshungulwa kwesikhalazo sangaphakathi, kuzothathwa ngokuthi uNgqongqoshe usichithile isicelo sangaphakathi.

### **Isicelo enkantolo [isigaba 78]**

Ofake isicelo, ilunga langaphandle noma umfakisicelo nabo bazokwaziswa ukuthi bangafaka isicelo enkantolo efanelekile yokubuyezwa kwesinqumo sikaNgqongqoshe mayelana nesikhalazo sangaphakathi. Isicelo esinjalo kumele senziwe zingakapheli **izinsuku ezingama-30** kuthathwe isinqumo. Umfakisicelo noma ilunga langaphandle lingafaka isicelo enkantolo sokubuyezwa kwalokhu ngemuva kokuthi ofake isicelo noma ilunga langaphandle seliqedile ngenqubo yokubuyezwa yangaphakathi.

## 12 UKUGUNYAZWA KWE-NCWADI YOKUCACISA

DESIGNATION	SIGNATURE	DATE SIGNED
HEAD OF UNIT		21 February 2023
CHIEF EXECUTIVE OFFICER		21 uNhlolanja 2023

**IFOMU A**

**ISICELO SOKUTHOLA IREKHODI LENHLANGANO YOMPHAKATHI**

(Isigaba 18 (1) soMthetho Wokukhuthaza Ukutholakala Kolwazi, 2000 (uMthetho No. 2 ka 2000))

[Umthethonqubo 6]

**OKUSETSHENZISWA UMNYANGO**

Inombolo yereferensi: .....

Isicelo samukelwe ngu.....( isho isikhundla, igama nesibongo sesikhulu solwazi / iphini lesikhulu sezokwazisa) ngo

.....(usuku) e .....(indawo).

Imali yesicelo (uma ikhona): R .....

Idiphozi (uma ikhona): R .....

Imali yokufinyelela: R .....

.....

**ISIGINESHA YESIKHULU SOLWAZI / IPHINI LESIKHULU SOLWAZI**

**A. Imininingwane yenhlangano yomphakathi**

Isikhulu Esibhekele Ulwazi / iSekela Lesikhulu Esibhekele Ulwazi:

**ISIKHUNGO SOKUPHATHWA KWE-GAUTRAIN (GAUTRAIN MANAGEMENT AGENCY (GMA))**

Ikheli Lendawo: 44 Grand Central Boulevard  
Grand Central Ext. 1  
**Midrand**

Ikheli Leposi : P.O Box 1266, Kelvin, 2054

Ucingo : 011

Ikheli le-Imeyili : nkhanel@gautrain.co.za

**B. Imininingwane yomuntu ocela ukufinyelela kwirekhodi**

- (a) Imininingwane yomuntu ocela ukufinyelela kwirekhodi kufanele ibhalwe ngezansi.
- (b) Kufanele kubhalwe nekheldi kanye / noma inombolo yesikhahlamezi seRiphabhuliki
- (c) Ubufakazi besikhundla sokwenza isicelo, uma kusebenza, kufanele bufakwe.

Amagama aphelele nesibongo:.....

Inombolo kamazisi: .....

Ikheli leposi.....

Inombolo yesikhahlamezi: .....

Inombolo yocingo:..... Ikheli le-Imeyili: .....

Isikhundla okufakwe ngaso isicelo , uma sifakelwa omunye umuntu:

.....

**C. Imininingwane yomuntu isicelo esenziwe egameni lakhe**

Lesi sigaba kufanele sigcwaliswe KUPHELA uma isicelo solwazi senzela omunye umuntu.

Amagama aphelele nesibongo:.....

Inombolo kamazisi: .....

**D. Imininingwane yerekhodi**

- (a) Nikeza imininingwane ephela yerekhodi okucelwa ukufinyelela kulo, kubalwa inombolo yereferensi uma uyazi, ukuze lelo rekhodi litholakale.

(b) Uma isikhala esinikeziwe singanele, sicela uqhubeke kwelinye iphepha bese ulinamathisela kuleli fomu. Umfakisicelo kufanele asayine wonke amakhasi awengezile.

1. Incazelo yerekhodi noma ingxenywe esemqoka yerekhodi

.....  
.....  
.....  
.....  
.....  
.....  
.....

2. Inombolo yereferensi, uma ikhona:

.....  
.....

3. Eminye imininingwane yerekhodi:.....

.....  
.....  
.....

**E. Imali**

- (a) Isicelo sokuthola irekhodi, ngaphandle kwerekhodi eliqukethe imininingwane yakho, sizocutshungulwa kuphela uma sekukhokhwe imali yesicelo.
- (b) Uzokwaziswa ngemali edingekayo okumele ikhokhwe njengemali yesicelo.
- (c) Imali ekhokhelwa ukufinyelela kwirekhodi incike ohlotsheni lwendlela yokutholakala kwalo okudingekayo kanye nesikhathi esifanele esidingekayo ukusesha nokulungisa irekhodi.
- (d) Uma ufanelekile ukuthi ungakhokhi mali, sicela usho isizathu salokho

Isizathu sokungakhokhi imali ekhokhwayo: .....

.....  
.....

## F. Indlela yokuthola irekhodi

Uma uvinjelwa ukukhubazeka ukuthi ufunde, ubuke noma ulalele irekhodi ngendlela yokufinyelela enikeziwe ku-1 kuye ku-4 ngezansi, yisho ukukhubazeka kwakho bese usho ukuthi lelo rekhodi lidingeka ngaluphi uhlobo.

Ukukhubazeka:		Indlela irekhodi elidingeka ngayo	
<p><i>Maka ibhokisi elifanele ngo-X.</i></p> <p><b>AMANOTHI:</b></p> <p>(a) <i>Ukuhambisana nesicelo sakho sokuthola ulwazi ngendlela ethize kuncike kwindlela irekhodi elitholakala ngayo.</i></p> <p>(b) <i>Isicelo sokufinyelela ngendlela ethize kunganqatshwa ezimweni ezithile. Esimweni esinjalo uzokwaziswa uma ukufinyelela kuzonikezwa ngenye indlela.</i></p> <p>(c) <i>Imali ekhokhelwa ukufinyelela kwirekhodi, uma ikhona, izonqunywa ngokwendlela okucelwa ukufinyelela ngayo.</i></p>			
1. <i>Uma irekhodi libhaliwe noma liphrintiwe:</i>			
	Ikhophi yerekhodi *		ukuhlolwa kwerekhodi
2. <i>Uma irekhodi liqukethe izithombe ezibukwayo (lokhu kufaka izithombe, amaslayidi, ukuqoshwa kwevidiyo, izithombe ezenziwe ngekhompyutha, imidwebo, njll.)</i>			
	buka izithombe	ikhophi yezithombe *	Ukulotshwa kwezithombe *
3. <i>Uma irekhodi liqukethe amagama aqoshiwe noma ulwazi olungakhiqizwa ngomsindo:</i>			
	lalela ingoma (ikhasethi elilalelwayo)		ukulotshwa kwengoma * (idokhumende ebhaliwe noma ephrintiwe)
4. <i>Uma irekhodi ligcinwe kwikhompyutha noma lifundeke ngendlela ye-elektronikhi noma ngomshini:</i>			
	Ikhophi ephrintiwe yerekhodi *	ikhophi ephrintiwe yolwazi Oolususelwa kwirekhodi*	Ikhophi esesimweni Esifundeke ngekhompyutha ngeflophi noma ngediskhi
* Uma ucele ikhophi noma ukulotshwa kwerekhodi (ngenhla), ngabe ufisa ukuthi ikhophi noma okubhalwe kulo kuthunyelwe kuwe? Imali yokuposa iyakhokhwa.		YEBO	CHA
Qaphela ukuthi uma irekhodi lingatholakali ngolimi olithandayo, ukufinyelela kungavunyelwa ngolimi lelo rekhodi elitholakala ngalo.			
Ungathanda ukulithola ngaluphi ulimi irekhodi?			

**G. Isaziso ngesinqumo maqondana nesicelo sokufinyelela**

Uzokwaziswa ngokubhalelwa ukuthi isicelo sakho samukelwe / senqatshiwe. Uma ufisa ukwaziswa ngenye indlela, sicela ucacise leyo ndlela bese unikeza imininingwane edingekayo ukuze sikwazi ukuhambisana nesicelo sakho.

Ungathanda ukwaziswa kanjani ngesinqumo maqondana nesicelo sakho sokufinyelela kwirekhodi?

.....  
.....  
.....  
.....

Isayinwe ku.....ngo..... usuku..... ka 20

.....  
ISIGINESHA YOMFAKISICELO / UMUNTU  
OKWENZIWA ISICELO EGAMENI LAKHE

**IZIMALI EZIMISELWE NGOKUPHATHELELE IZIKHUNGO ZOMPHAKATHI**

1. Imali yekhophi yencwadi njengoba kuhlangozwe kumthethonqubo 5 (c) ingu-R0,60 ikhophi ngayinye yephepha elingu-A4 Ikhasi noma ingxenye yalo.
2. Izimali zokukhiqiza kabusha okukhulunywe ngazo kumthethonqubo 7 (1) zimi kanje:

R (amarandi)

- (a) Ikhophi ngayinye yephepha elingu-A4 Ikhasi noma ingxenye yalo 0,60
- (b) Ikhophi ngayinye ephrintiwe yephepha elingu-A4 Ikhasi noma ingxenye yalo egcinwe kwikhompyutha noma elifundeka nge-elekthronikhi noma ngomshini 0,40
- (c) Ikhophi efundeka kwikhompyutha
  - i. iflophi 5,00
  - ii. (ii) idiskhi 40,00
- (d) Ukulotshwa kwezithombe ezibukwayo,
  - i. i-A4 Ikhasi noma ingxenye yalokho 22,00
  - ii. (ii) Ikhophi yezithombe ezibukwayo 60,00



- (e) Ukulotshwa kwerekhodi lokukhalayo,
  - i. i-A4 Ikhasi noma ingxenywe yalokho 12,00
  - ii. Ikhophi yerekhodi lokukhalayo 17,00
- 3. The request fee payable by every requester, other than a personal requester, referred to in regulation 7(2) is R35,00.

4. Imali yokuthola ulwazi ekhokhwa ngumfakisicelo eshiwo kumthethonqubo 7 (3) imi kanje:  
4.1

- (a) Ikhophi ngayinye yephepha elingu-A4 Ikhasi noma ingxenywe yalo 0,60
- (b) Ikhophi ngayinye ephrintiwe yephepha elingu-A4 Ikhasi noma ingxenywe yalo egcinwe kwikhompyutha noma elifundeka nge-elektronikhi noma ngomshini 0,40
- (c) Ikhophi efundeka kwikhompyutha
  - i. iflophi 5,00
  - ii. (ii) idiskhi 40,00
- (d) Ukulotshwa kwezithombe ezibukwayo,
  - i. i-A4 Ikhasi noma ingxenywe yalokho 22,00
  - ii. (ii) Ikhophi yezithombe ezibukwayo 60,00
- (e) Ukulotshwa kwerekhodi lokukhalayo,
  - i. i-A4 Ikhasi noma ingxenywe yalokho 12,00
  - ii. Ikhophi yerekhodi lokukhalayo 17,00
- (f) Ukucinga nokulungiselela ukudalulwa kwerekhodi, R15,00 ngehora ngalinye noma ingxenywe yehora, ngaphandle kwehora lokuqala, elidingeka ngokufanelekile kulolo cwaningo nokulungiselela.

4.2 Ngokuhambisana nesigaba 22 (2) soMthetho, okulandelayo kuyasebenza:

- a. Amahora ayisithupha njengamahora okufanele weqiwe ngaphambi kokuba kukhokhwe idiphosi; futhi
- b. ingxenywe eyodwa kwezintathu yemali yokuthola ulwazi ikhokhwa ngumfakisicelo njengediphosithi.

4.3 Imali yokuposa ikhokhwa uma ikhophi yerekhodi kufanele iposelwe ofake isicelo.

**IFOMU B**  
**ISAZISO SOKUFAKA ISICELO SANGAPHAKATHI**

(Isigaba 75 soMthetho Wokukhuthaza Ukutholakala Kolwazi, 2000 (uMthetho No. 2 ka 2000)) [Umthethonqubo 8]

BHALA INOMBOLO YAKHO YEREFERENSI: \_\_\_\_\_.

**A. Imininingwane yenhlangano yomphakathi**

Isikhulu Esibhekele Ulwazi / iSekela Lesikhulu Esibhekele Ulwazi:

**B. Imininingwane yomfakisicelo/ilunga langaphandle elifake isicelo sangaphakathi**

- (a) Imininingwane yomuntu ofaka isikhalazo sangaphakathi kumele ibhalwe ngezansi.  
(c) Uma okhalazayo eyilunga langaphandle hhayi umuntu owayecele ulwazi kuqala, imininingwane yalowo ongumfakisicelo kufanele ibhalwe ku-C ngezansi.

Amagama aphelele nesibongo:.....

Inombolo kamazisi:.....

Ikheli leposi:.....

Inombolo yesikhahlamezi.....

Inombolo yocingo:.....

Ikheli le-imeyili:.....

Isikhundla okufakwe ngaso isicelo sangaphakathi egameni lomunye umuntu:.....

.....

.....

**C. Imininingwane yomfakisicelo**

Lesi sigaba kumele sigcwaliswe KUPHELA uma ilunga langaphandle (ngaphandle kwalowo ofake isicelo) lifaka isicelo sokudluliswa kwangaphakathi.

Amagama aphelele nesibongo:.....

Inombolo kamazisi:.....

**D. Isinqumo isikhalo sangaphakathi esiphikisana nazo**

Faka uphawu u-X ebhokisini elifanele lesinqumo isikhalo sangaphakathi esiphikisana naso:	
	Ukunqatshwa kwesicelo sokufinyela
	Isinqumo maqondana nezimali ezibekiwe ngokwesigaba 22 soMthetho
	Isinqumo maqondana nokwelulwa kwesikhathi sokubhekana nesicelo ngokwesigaba 26(1) soMthetho
	Isinqumo ngokwesigaba 29(3) soMthetho ukwenqabela ukufinyelela ngendlela ecelwe ngumfakisicelo
	Isinqumo sokuvumela isicelo sokufinyela

**E. Izizathu zokudlulisa isikhalo**

Uma isikhala esinikeziwe singanele, sicela uqhubeke kwelinye iphepha bese ulinamathisela kuleli fomu. Kufanele usayine wonke amakhasi owengezile.

Yisho izizathu lesicelo sangaphakathi esisuselwa kuzo: Yisho noma yiluphi olunye ulwazi olungaba semqoka uma kucutshungulwa isikhalazo:

.....

.....

.....

.....

.....

.....

.....

.....

.....

.....

.....

.....

.....

.....

.....

.....

.....

.....

.....

.....

.....

.....

.....

.....

.....  
.....

**E. Isaziso ngesinqumo sesikhalazo**

Uzokwaziswa ngokubhalelwa ngesinqumo sesikhalazo sakho sangaphakathi. Uma ufisa ukwaziswa ngenye indlela, sicela ucacise leyo ndlela bese unikeza imininingwane edingekayo ukuze sikwazi ukuhambisana nesicelo sakho.

Yisho indlela :.....

Imininingwane yendlela: .....

Isayinwe e..... ngo.....usuku.....ku 20

.....

ISIGINESHA YOFAKA ISICELO

**YOKUSETSHENZISWA UMNYANGO:**

**IREKHODI ELISEMTHETHWENI LOKUFAKA ISIKHALO NGAPHAKATHI:**

Isikhalo samukelwa ngo..... (usuku)

ngu .....

(dalula isikhundla, igama nesibongo sesikhulu solwazi / iphini lesikhulu solwazi).

Ukudluliswa kwesicelo kuhambisana nezizathu zesinqumo somphathi wolwazi / sekela lesikhulu solwazi futhi, lapho kufanele khona, imininingwane yanoma yiliphi ilunga langaphandle lelo rekhodi elihlobene nalo, elethwe isikhulu solwazi / iphini lesikhulu solwazi ngo (usuku) kusiphathimandla esifanele .

**UMPHUMELA WESICELO:**

.....

.....  
.....  
.....  
.....

ISINQUMO SESIKHULU SOLWAZI/IPHINI LESIKHULU SOLWAZI SIQINISEKISIWE/ ISINQUMO  
ESISHA SIBHALISIWE

OKUSHA

ISINQUMO:

.....  
.....

.....  
.....  
.....  
.....  
.....  
.....  
.....  
.....

ISIPHATHIMANDLA ESIBALULEKILE .....Usuku.....

KUTHOLWE YISIKHULU SOLWAZI / IPHINI LESIKHULU SOLWAZI KUVELA  
KWISIPHATHIMANDLA ESIBALULEKILE NGO (usuku):.....